



SAFER CHESHIRE EAST PARTNERSHIP (SCEP)

Annual Report
2023–2024



CONTENTS

PAGE

1. Introduction	3
2. Duties of SCEPT	4
3. Addressing Priority Concerns	5
4. The Role of Council Services	6
5. Police and Crime Commissioner (PCC) Funding	7
6. SCEPT Funding 2023-24 (<i>Delivery, Outcomes and Impact</i>)	8
7. Community Safety Projects	17
8. Communication and Engagement	24

1 INTRODUCTION >

Welcome to the Annual Report of the Safer Cheshire East Partnership for 2023-2024. We work together to make Cheshire East a safe place to live, work and visit.

Reading the contents of this report you will be able to find out more about the work we do, our strategy, plans, priorities and engagement with partners and residents.

The Safer Cheshire East Partnership (SCEP) is a statutory partnership under The Crime & Disorder Act 1998. It brings together the following responsible authorities who must work together to understand and address community safety issues in their area:

- Cheshire East Council
- Cheshire Police
- Clinical Commissioning Group / ICB
- Cheshire Fire & Rescue Service
- National Probation Service

Several other organisations who attend the SCEP and contribute to its work but are not under the same statutory duty, include:

- Youth Justice Service
- The Office of the Police & Crime Commissioner
- Cheshire Domestic Abuse Services
- Voluntary Sector

The terms of reference for the SCEP describe its role, working practices and the duties the partnership is required to carry out, which are highlighted below:

- Producing an annual Partnership Plan based on a Strategic Intelligence Assessment (SIA). Using intelligence, data and indicators to identify root causes, areas of risk and identify emerging themes and challenges for the Community Safety Partnership for the next 12 months.
- Managing and monitoring an annual Funding and Commissioning Plan.
- Engaging and consulting with communities about community safety issues across the borough.
- Allowing partners to share relevant information and support the work of other Strategic Boards to address issues and concerns.
- Conducting Domestic Homicide Reviews (DHR's).

The Safer Cheshire East Partnership Annual Report provides details relating to the work carried by its partners to address concerns and evidence the progress and impact delivered against those Community Safety priorities agreed through the provision of the Partnership Plan.

The report references information on the role of SCEP and of the various 'Task and Finish' groups specifically established to address specific Community Safety themes. Reporting structures to keep partners informed of activity and progress. The report also focuses on the funding made available to SCEP by the Police and Crime Commissioners Officer (PCC) and how these resources are being used to deliver a range of work-streams and projects designed to impact on Community Safety priorities.

2 THE DUTIES OF SCEP >

The Partnership Plan is based on the Strategic Intelligence Assessment (SIA)

Completed for 2022/25 and signed off by the SCEP board in December 2022, the SIA is compiled using intelligence data and analytical evidence to identify Community Safety priorities. Priorities have been identified to inform the SCEP Partnership Plan.

(Further details are included in this report about the SIA on page 13)

Funding Management

The provision of annual funding made available to SCEP by the PCC to impact on Community Safety priorities is the management responsibility of SCEP including adherence to the funding application process and performance management of activity. *(Further details are included on the pages of this report)*

Community Engagement and Consultation

SCEP maintains a website providing partners and members of the public with further information on the work of the Community Safety Partnership.

[https://www.cheshireeast.gov.uk/environment/
community_safety/safer_cheshire_east.aspx](https://www.cheshireeast.gov.uk/environment/community_safety/safer_cheshire_east.aspx)

Information Sharing Agreement

The Crime and Disorder Act 1998 imposes a duty on Chief officers to share information with Crime and Disorder Reduction Partnerships where appropriate. In addition, sub-groups of SCEP have information sharing agreements in place for specific pieces of work.

Domestic Homicide Reviews

In line with statutory guidance, the SCEP currently is managing several DHR's. Progress, activity and the management of DHR's, including agreed 'Action Plans' to inform the learning from cases is formally monitored by the SCEP at their quarterly meetings. The website also publishes copies of the summary reports of any completed (DHR's).

3 ADDRESSING PRIORITY CONCERNS >

The SCEP is provided with the latest crime statistics and receives presentations and reports from its partners at each of the quarterly meetings to understand and identify issues, emerging risks, threats agree strategic direction and assess performance.

'Task and Finish' groups have been created within SCEP to deliver pieces of work or projects to mitigate risk, provide support, impact on outcomes and increase public confidence and awareness. SCEP receives **quarterly reports** from these work-streams to keep partners informed of activity and invite the opportunity for comments, questions and scrutiny.

During 2023-24 the following sub-groups have been established:

PREVENT & Channel Panel

Providing information on the progress of the work undertaken in the PREVENT & Channel Panel space. Working closely with partners in a multi-agency setting to reduce the risk of those identified within CE of becoming involved in terrorism. The Channel Duty Guidance was updated in October 2023 and PREVENT guidance updated and published on 31st Dec 2023. All Local Authorities have a duty to own and deliver CHANNEL arrangements. As part of the process the Home Office are responsible for overseeing the functions of Cheshire East Channel Panel

and undertake a *'Bench-marking Exercise'* to ensure both governance and operational practices are in order. Cheshire East are proud to report their Prevent Duty Assurance Process (*Bench-marking*) 2023/24 was awarded *'Exceeding'* in 6 of the 8 categories.

Integrated Offender Management (IOM)

IOM cohort members may cause serious harm and impact on Community safety. IOM Management in Cheshire East report any issues to SCEP arising from local and regional governance groups and introduce the latest Police scorecard indicative of levels of offending in the current cohort.

Domestic Homicide Reviews (DHR's)

A multi-agency review occurs when someone has been killed because of domestic abuse. Professionals who have not been involved in the case must review what happened and identify what needs to be changed to reduce the risk of it happening again.

Domestic Homicide Reviews (DHRs) came into effect on 13 April Under section 9 of the Domestic Violence, Crime and Adults Act (2004), they were established on a statutory basis (2004).

The Safer Cheshire East Partnership is responsible for establishing DHR's within Cheshire East. After completing a DHR and obtaining approval from the Home Office, Quality Assurance Panel the SCEP is required to publish the anonymised executive summary on their website and manage the associated Action Plans.

Serious and Organised Crime Board (SOC)

The SOC multi agency Strategic and Operational Groups meet regularly bringing together partners from across the Cheshire East footprint.

The work by partners concentrates on the main risks, threats and harm identified in communities affected by SOC behaviour across the 3 Local Policing Units (LPU's) of Crewe, Macclesfield and Congleton.

Partners share important information to disrupt criminal gang activity and address areas of work in adherence to the Home Office 4 P's Policy to Prevent, Pursue, Protect and Prepare.

Gypsy, Roma and Travellers

A Strategic Group is to be established later in 2024 to which smaller operational sub-groups report to. These groups are designed to expand access to services from members of this diverse community. The group has a focus on improvements to health and education and also creates opportunities for engagement. In 2023-24 training has been delivered to partners to raise awareness around the Gypsy and Traveller communities.

In July 2024 a Gypsy and Traveller Framework was approved and published, the website has been improved to provide a rich source of information about the traditions of the Roma community together with details of access to a range of services.

Plans are now being finalised for the introduction of a Transit Site based in the borough to support travelling communities visiting Cheshire East.

Road Safety Partnership

Partners including Police, Fire Service and Cheshire East Council meet regularly to review the Road Safety Plans for Cheshire East.

The plans aim to reduce the number of killed and seriously injured across the Cheshire East road network. The Road Safety Plan focuses on highway improvements, speed management, enforcement, engineering, emergency response and education.

4 THE ROLE OF COUNCIL SERVICES >

Cheshire East Council plays a key role in helping to co-ordinate the partnership effort to keep residents safe and increase public reassurance, a range of services (listed below) directly impact on addressing a wide range of Community Safety issues.

- Housing Services investigating the use of licensing schemes for Houses of Multiple Occupation and ensuring minimum security standards are being met.
- Licensing to ensure licensed premises are complying with their responsibilities.

- Trading Standards investigate persistent and/or serious criminal activities and civil law breaches, in particular those involving unsafe goods, fraud, illegal and unfair practices, counterfeiting and illicit goods, scams, doorstep crime (rogue traders) and persistent consumer detriment.
- Adult Social Care – working with partners to ensure Adults at Risk are enabled to live independent lives free from abuse, neglect or exploitation.
- Anti-Social Behaviour Team – work in partnership to prevent incidents of ASB and support those at risk of causing ASB. Within the team are the Community Enforcement Officers responsible for the Enforcement and removal of Abandoned Vehicles, Vehicles for sale on the highway, Enforcement of Litter and Dog Fouling, Issue of Fixed Penalty Notice (including PSPO's).
- Commissioning Providing important contracts to support domestic abuse services and substance misuse that meet needs and provide flexibility around future provision.
- Cheshire East Highways – Maintaining and improving the road network across the borough with a focus on locations involving motorists and pedestrians seriously injured or killed.
- Children's Services working with partners to identify and respond to vulnerable children at risk of exploitation

5 POLICE AND CRIME COMMISSIONER (PCC) FUNDING >

Partners of SCEP consider annual financial support provided directly from the PCC office. The funding can be accessed via applications using two funding windows each year which operate (1st April to 30th June and 1st September to 30th November).

Applications approved by the SCEP Management Board are then submitted to the Police and Crime Commissioner for their approval. Funding is offered to deliver specific projects or pieces of work to impact directly on agreed Community Safety priorities identified in the Partnership Plan.

In 2023-24 an annual allocation of £147.550 was made available with guidance and criteria for funding bids set out by the PCC. It is worth noting that applications submitted, particularly in the second funding window would likely be unable to spend the full allocation within the current financial year and some projects would continue beyond April 2024.

Contributions from the annual allocation of funding can also be agreed to support sub regional Community Safety work. The PCC have identified those areas of work which require financial contributions from each of the 4 Cheshire Local Authorities. In 2023/24 these include, an annual contribution of £10k was approved back in 2020 for a dedicated Police Analyst

based within police staffing and this has been a continued and valued post which was approved again for 2023/24.

A £25k fund was set aside by the PCC to support the 4 Cheshire Local Authorities with any Domestic Homicide Reviews and in view of additional cases undertaken by Cheshire East, £15k was allocated to secure the appointment of a Chair/Author to manage these cases.

The SCEP has consistently and successfully bid for their full allocation of PCC funding and this remains consistent for 2023-24.

1st April to 30th June 2023	£
Radio Link	7,000
Regional Analyst	10,000
UK Scams – Aftercare Project	45,638
ASB / SOC Intervention	30,000
Domestic Homicide Reviews	13,639
Adult Safeguarding Training	15,000
1st September to 30th November 2023	£
Cash for Coaches	11,700
Modern day Slavery Support	15,000

The PCC published its latest Police and Crime Plan in January 2024 with priorities consistent with those identified by SCEP.

6 SCEP FUNDING 2023-24 (Delivery, Outcome and Impact) >

Radio Link – Contribution £7,000

During the 2023/24 financial year Cheshire East received 307 direct incidents reported to the CCTV control room by radiolink users.

The main offences reported were anti-social behaviour, shoplifting, public order and assaults. Crewe and Macclesfield Town Centres were the highest in regard to number of reports.

The service currently has 164 members across 6 schemes located in Nantwich, Crewe, Sandbach, Congleton, Macclesfield and Wilmslow.

In the new financial year, the council are reviewing the delivery of the Radiolink system in particular that it requires to be upgraded to improved software support as the system has not benefited from an upgrade for several years.

Following recent reviews and Cheshire East Council's Financial Strategy which highlights current budget pressures this scheme which receives plaudit from all partners involved has been identified as one to explore further external funding to maintain its presence.

The CCTV Service will continue to lead and manage the scheme including the management of users, ensuring security of the system and technology

is fit for purpose through current arrangements and resources in the team and ongoing contract arrangements with the provider and maintenance of the equipment.

If funding is not approved or ceased, then the alternative options are either scope for other external funding methods or ending the service.

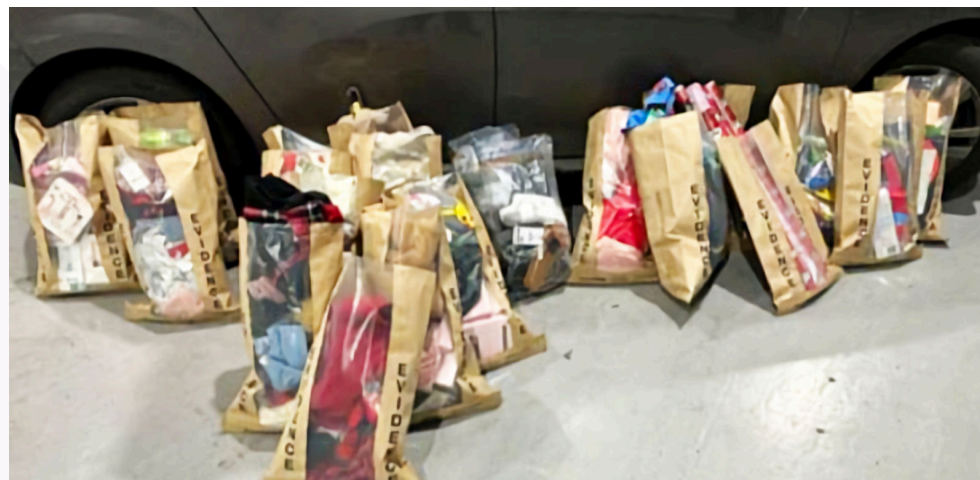
Case study 1

The radiolink 'shopwatch' scheme sprang into action when our CCTV service took a report from a retail premise of a person in store with a large knife in their pocket. CCTV operators located the offender leaving the store and tracked him across the town whilst updating the police and radiolink users on locations. Police were able to live view the scene through our system process and made decisions on how to resolve the situation safely. This resulted in the person being arrested for possession of an offensive weapon, the knife being recovered and no harm caused.

Case study 2

This incident was initially reported by the TK Maxx store in Macclesfield, contacting CCTV via the radiolink system following suspicious people withing the store. A CCTV operator picked up one of the females on camera and followed her back to a car obtaining the vehicles registration number and guiding police officers to the area.

The vehicle was stopped on nearby roads, 4 females were arrested, and £3,000 worth of stolen goods were recovered. (See pic below)



Case study 3

'Radiowatch' operators spotted an altercation which developed into a serious assault in Crewe Town Centre whereby three persons attacked another, the incident was reported to the CCTV control room. Prior to police arrival the offenders ran to a vehicle which was tracked by CCTV operators as it drove dangerously through the town centre. Police officers soon managed to stop the vehicle where all three were arrested for serious assault, and the driver for further driving offences.

Regional Analyst — £10,000

Regular meetings take place between the Managers responsible for Community Safety in the 3 other Cheshire Local Authorities along with the PCC office throughout the year. As part of these conversations, consideration is given to areas where the Community Safety Partnerships can work more collaboratively and improve their delivery to impact on priorities.

SCEP initiated the conversation in 2019 for each Cheshire LA to commission a service for a dedicated resource employed within Cheshire Police to provide data and analysis to inform priorities and report to the quarterly meetings and advise of any emerging risks or threats.

This resource has become very important, with funding been agreed again this year to maintain the service. In addition to the quarterly police data reports, additional request for data can also be made to support separate pieces of work each of the 4 LA's may have to confirm the accuracy of criminal activity, provide evidence to support further funding applications or bespoke pieces of work. For example, incident reports to police to evidence an application for a Public Space Protection Order (PSOP).

Regular contact with the Force Intelligence Bureau (FIB) within Cheshire Constabulary has enabled work towards providing a consistent reporting process to SCEP members which has been delivered either by the Analyst or a Senior Police Officer.

Each year the police analyst will provide an overview of crime data for SCEP to make any amendments to the priorities initially identified in the Partnership Plan. The role of the dedicated analyst is pivotal in provision of the information supported by contributions from other SCEP partners.

UK Scams — Aftercare Project — £45,638.00

As the Cheshire Police and Crime Plan highlights, Cyber-crime is now the fastest growing crime in Cheshire. This is consistent with the information within the SCEP Partnership Plan which identifies Fraud as one of its main priorities. Fraud has now become a borderless crime and Cheshire East communities are vulnerable to doorstep crime, rogue traders and internet SCAMS with older people in our communities facing the same issues as their peers across the UK.

People can be scammed at any age, but the average age of a scam victim is 75. This means older people who are defrauded have less opportunity to recoup their financial loss through re-earning.

Those who are defrauded are often forced to continue working for longer, to recoup some of the money.

The work carried out within this project has been extremely beneficial to both warn people of the potential scams and provide direct support to those who have regrettably fallen victim to the fraudsters.

The PCC funding has now provided the extension of the service into the South of the borough.

The quality of the service was recognised with 2 awards.

The project manager was highly commended in the Brian Smith Award category of the Chartered Trading Standards Institute Hero Awards and the multi-agency project team was awarded the Partnership Working Award at the Cheshire East Safeguarding and Community Safety Awards held in November 2023.

The project team are planning two events in October 2024 in Sandbach and Wilmslow to provide information to residents living in those communities of the risks associated with on-line Scams. These events will follow the format delivered to Congleton in 2023 which was very well attended by both professional staff working to protect communities from fraud and to raise awareness with members of the public.

BELOW: Mark Lodge from Cheshire East Trading Standards Team delivering a presentation at the Congleton SCAMS Awareness event in October 2023



Positive outcomes:

- **Delivered 67 one-to-one intensive aftercare support sessions** to older people who have been a victim of fraud or have had a near miss.
- **Shared printed information with over 1000 delegates** at scams awareness sessions, to help them avoid becoming a victim or repeat victim of fraud.
- **One-to-one sessions** — 27 individuals have accessed victim support one-to-one sessions. They report that they are now more scam aware and less likely to become a repeat victim of fraud.
- **Scams awareness support to older people through delivery of printed bulletins** — Around 600 monthly bulletin updates, older people are regularly reminded of how to avoid becoming a victim of fraud.
- **Printed information for delegates at awareness-raising talks and one-to-one sessions** — The funding allows every delegate to have a goody bag of scams awareness information. It includes information from Age UK national, AUKCE and Trading Standards. Having the information pack to take away means older people can refer to it long after the awareness session they attended.

- **Project User Group** — This group of stakeholders meets quarterly. The group provides a current overview of how scams affect their service users, so that project can be shaped to provide what's needed for older people to avoid becoming victims or repeat victims of fraud.
- **Trading standards** — The project has been a success thanks to the partnership working with CEC Trading Standards Team. They provide intelligence, information, joint visit support and manage referrals for the one-to-one sessions for victims. They liaise with referring agencies for further information.
- **Adult Social Care** — The project is seeing more referrals from CEC Adult Social Care. They also provide the project with information about activities for clients accessing the one-to-one aftercare sessions, to help them re-engage with their community.
- **Cheshire Police Economic Crime Unit (ECU)** — The project relies on referrals from the ECU. They work in conjunction to provide the right support by the right agency at the right time.
- **SCAMS public engagement** — Events organised by the project team have provided 'live' events across the borough to share information on SCAMS and signpost for direct support.

Adult Safeguarding Training — £15,000

Cheshire East Council provided a series of training courses throughout the year to a wide range of partners to raise the awareness of domestic abuse where a carer is looking after a person with dementia and providing them with support. As a result, a Dementia/Carers and Domestic Abuse Project Group was set up to look at this specific area of work.

The group developed guidance and information to professionals, carers and people living with dementia around domestic abuse.

The group also commissioned a theatre company called ODDARTS to develop a script based on a real case study obtained from the Alzheimer's Society, perform the play and also to provide a film of the play for future training opportunities.

A total of 6 training sessions were provided throughout the year, the details of which are set out below:

9 th May 2023	AM session	43 people attended
25 th May 2023	AM session	31 people attended
9 th May 2023	PM session	34 people attended
25 th May 2023	PM session	30 people attended
22 nd Nov 2023	AM session	24 people attended
22 nd Nov 2023	PM session	42 people attended

Total individuals in attendance across all 6 sessions ran between May and November 2023 attracted a total audience of 214. A training video is now available which shows the play and the topical questions raised within the performance.



Please see below further feedback comments captured from audience members following the training:

"This was an excellent session that raised a subject we need to spread more awareness about and be alert for incidence of this. Perhaps we need to change the language we use. Really helpful – thank you."

"Very informative session that challenges your own perspective. The use of performance to generate a conversation was inspired"

"The course was excellent and really opened my eyes. Incredibly dynamic and thought provoking. I'd recommend anyone in care, health care or domestic violence services to take part."

"Very thought provoking, the link between financial abuse and domestic abuse became very clear today. Will be looking more closely now."

ASB/SOC – Intervention and prevention — £30,000

Crewe and Poynton have been identified locations for incidents for 'Hot Spots' of Anti-Social Behaviour.

Work commenced in each area to focus on intervention and prevention opportunities to create conditions to reduce incidents of ASB.

The strategy was to attract the attention of younger members of the community to concentrate their minds on positive activities and hold their interest to prevent them becoming involved in further incidents.

Poynton Town Council have been working in partnership with Stockport County Football Club for a few years with funding support from SCEP and this has enabled a consistent approach to identify those young people at risk of causing ASB and working with them from an early age.

Local venues have been used to run regular weekly football training sessions. The ages of those young people enrolling have ranged from 9 to 17.

The benefits have been evidenced by those who ordinarily would not have had the funds to pay for coaching have attended.

A further activity has been provided for girls and regular weekly dance sessions have proved both popular and resulted directly in a reduction of ASB incidents, particularly on the nights the facilities have been provided.

The young people have also benefitted from the improved communication between them and local council employees, school staff and the police.

Whilst the football training was attended by boys and girls, an additional project was funded to entice young girls to enrol in dance classes.

The final provision in Poynton was provided during the Half Term in 2024 with a BMX Bike provision in a local park which attracted a wide age range of young people along with a number of parents who attended.

In Crewe the local PCSO's—working closely with Crewe Alexandra Football Club—created County Games with sporting activities being provided during each of the school holidays at Easter, Summer and October half-term using school and leisure centre venues across Crewe, Sandbach and Holmes Chapel.

Engagement was secured following promotion through secondary schools with a focus by the police to work with those young people who had come to their attention for involvement in ASB.

The activities were followed up with an awards evening held at Crewe stadium where young people involved collected awards for their achievements with parents being invited to join in the celebrations.

PERIOD	AREA		
	Crewe	Poynton	Grand Total
April 2022 - March 2023	1344	182	1526
April 2023 - March 2024	1158	99	1257
Grand Total	2502	281	2783

The above data evidences a significant reduction in ASB across Crewe during the period of interventions.

Stories of difference

A 14 year old diagnosed with ADHD was one of the young people attending the course and during a session caused some concerns in relation to his aggressive attitude. The coaches talked to him and have since built up a positive relationship. His mother has been so grateful for the opportunity and support provided to her son and reported he is far better behaved from having a new friends and a weekly focus to do something he enjoys which otherwise she could not have afforded.

Work under the Serious Violence Duty which has also attracted funding will see the commission of services with Remedi and Queensbury for 2024 which will focus on Intervention and Prevention to work with young people at risk of causing ASB and further reduce the levels of incidents reported in 'hot spot' areas across the borough.

Domestic Homicide Reviews — £13,639

The Safer Cheshire East Partnership has a Statutory Duty placed on it to undertake Domestic Homicide Reviews. Following an unprecedented number of cases referred by the police in the past 18 months, the SCEP Management Group requested additional financial support from the PCC to support commissioning to appoint independent Chairs and Authors to oversee each of the 7 reviews.

The progress for each of the reviews are reportedly to the SCEP meetings on a quarterly basis. The DHR requires contributions from a range of partners who had direct involvement with either the victim or the perpetrator. Following the review the primary focus is to learn any lessons from where agencies could have improved their responses or worked differently to prevent future fatalities.

A multi-agency 'Action Plan' is approved by partners of the DHR panel with progress and outcomes shared with the full membership of SCEP.

Cheshire East Council have a responsibility to submit a copy of the final report to the Home Office for their Quality Assurance comments and then to publish the summary report on the SCEP website. Each of the current DHR's being managed in Cheshire East are at varying stages.

Cash for Coaches — £11,270

Safety Central is Cheshire's interactive life skills centre which has been designed to provide an experience for visitors to stay safe.

Based in Lymm, Cheshire Fire and Rescue Service's award winning education centre receives visits from school children from across Cheshire.

With the support of SCEP funding 15 bookings have been secured for Cheshire East Schools, with their visits starting from April 2024 will run through until December. The funding has provided an opportunity for those schools who have been unable to visit previously the opportunity to do so and allow schools who have been restricted due to financial pressures attend. Safety Central have also offered smaller schools the opportunity to visit where they have another small school in to ensure that the staff can utilise the opportunity to get as many children in as possible.

Following the visit by the children a progress exercise is conducted by the Safety Central staff which provides information on how what the children have learned during their visit.

The results are very positive with many children returning home and advising their parents to switch off plug sockets before going to bed!

BELOW: Members of SCEP together with pupils of a visiting school outside Safety Central in April 2024



Safety Central also kindly host one of the quarterly SCEP meetings to give those partners of the board the opportunity to visit the facilities. Later this year colleagues from the Health and Wellbeing Board will also have the opportunity to go on the tour of the building and facilities as they join SCEP members for a joint strategic group meeting.

Modern Day Slavery Support — £15,000

In November 2023 Cheshire East produced a refresh of its Modern Day Slavery 'Protocol' a document which has been recognised as a piece of Best Practice' which has since been shared for use with the neighbouring Cheshire Local Authorities.

The revised MDS 'Protocol' took account of the rise in referrals received by Cheshire East Council as numbers of refugees coming to the UK have increased. The exploitation of adults comes in many forms and SCEP recognises that MDS is a growing industry which affects a cohort of people within our communities.

Raising awareness of the issue of MDS has been a focus and through PC funding Cheshire East has been able to arrange 2 training days in March and November 2023 through the commissioning of Hope for Justice. The first course earlier this year was oversubscribed allowing those who were unable to book on the course to register again in November.

Feedback from the training course was very positive and the trainers were able to highlight how working professionals could spot the signs of safety of those likely to be a victim of MDS. The funding has secured training delivery sessions until 2026.

The multi-agency group formed to develop the MDS '*protocol*' identified a gap in support provision to both professionals supporting victims and to the victims themselves.

The PCC funding has allowed the commissioning of '*Causeway*'—an agency experienced in dealing with MDS to provide on-hand practical support to the victims, whilst being placed in the crucial period of emergency accommodation, and also to provide advice to practitioners whilst they in-turn support the victim.

Community Safety projects

The Safer Cheshire East Partnership became a member of the Water Safety Partnership established by lead officers from the Cheshire Fire and Rescue Service. The Water Safety Partnership was formed to consider how working closely with partners, areas of open water sites across Cheshire could be made safer.

Pickmere lake—located in Cheshire East which also borders with Cheshire West and Chester Council—was the focus of a site visit between council officers and other partners in September of 2023. Concerns were raised by the local Parish Council relating to water safety. However, it was clear that these concerns are multifaceted and are also interlinked with broader concerns about the activities taking place around the lake and associated anti-social behaviour during periods of extreme heat.

Following the site visit an '*Action Plan*' and report was produced which focused on addressing a number of issues at the site which included:

- **Parking/traffic management issues around Pickmere village**
- **High volumes of visitors congregating around the lake**
- **Anti Social Behaviour, including disposable barbecue usage, and subsequent damage/wildfires**
- **Littering**
- **Substance Misuse**
- **Urination/defecation**
- **Noise issues**

7 Community Safety Projects >

SCEP working in partnership with various agencies has contributed to the delivery of work undertaken to impact on a range of other Community Safety initiatives. This has been achieved in a number of ways through sharing information, committing resources, providing equipment or identifying those best placed in the voluntary sector to offer their support.

During 2023-24 SCEP has demonstrated through the following projects a constant and reliable advocate to partner providing reassurance to residents or simply raising awareness of local concerns.

Training

Funded through SCEPT in 2023-4 a number of training opportunities have been provided to partner agency staff to enable them to upskill and go about their jobs with more confidence.

The dedicated Safeguarding Training Officer has continued training throughout the year with the support of staff from CE licensing which includes every taxi driver registered in Cheshire East to complete Safeguarding Training in order for them to obtain their licence.



Combating Drugs Partnership (CDP)

In June 2022 the Government launched its 10 year drugs strategy, *'From harm to hope'*, which relies on coordinated action across a range of local partners including enforcement, treatment, recovery and prevention.

Underpinning the drugs strategy was the principle that combatting drug use and harm is a priority for all of Government working as a single team and as such every area is required to set up and establish a Combatting Drugs Partnership (CDP), providing a multi-agency approach to addressing shared challenges related to drug-related harm based on local context and need.

Serious Violence Duty

In January 2024, Cheshire produced its Serious Violence Duty Strategy which has been published on the SCEPT website.

The delivery of the strategy provides leadership and direction for the implementation of the Serious Violence Duty in Cheshire. This creates the conditions to bring the responsible authorities across the county together and commit to working together to establish Cheshire's response to the Serious Violence Duty.

Building on existing partnership work, the strategy provides a coordinated response to delivering the Serious Violence Duty whilst embedding a *'Health Based'* approach within members respective organisations. Delivering the requirements of the Serious Violence Duty ensures that the statutory duties are met and the strategy allows can establish and oversee workstreams and associated subgroups as required by the Duty.

PICTURED BELOW: *Police and Highways officers working together on David Whitby Way, Crewe*



In the past 12 months officers responded to 23 individual reports of illegal car meets and anti-social driving on the road, with one incident last May resulting in a road traffic accident involving a vehicle overturning and landing in a heady next to the carriageway.

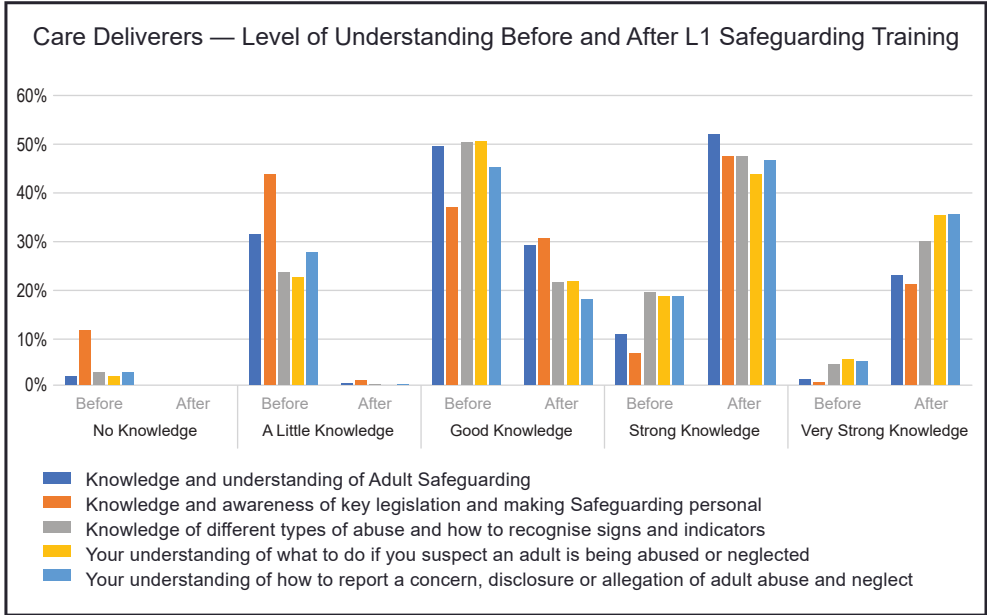
As part of the initiative designed to curb future irresponsible driving in the area, officers from Crewe working alongside SCEP partners placed signage along the carriageway warning motorists that those who do not respect the rules of the road and their fellow drivers will face prosecution. Cheshire East council assisted police by facilitating the moving of CCTV cameras to support the policing of this area, with Highways colleagues erecting the signage.

Any motorists found committing or captured on the newly installed CCTV driving without due care and attention or anti-socially, will be prosecuted under the Section 59 Police Reform Act 2002. The signs installed forms part of the police obligation to warn.

Those who are committing offences going forward can expect to receive notices of intended prosecution in the post, having been warned now with the new signage being installed. Under this act, motorists will be issued with a traffic offence report and, if you are issued with a further notice within 12 months, your vehicle will be seized.

A total of 437 taxi drivers in Cheshire East attended safeguarding training in 2023/24. Just over 93% of those that attended training provided feedback. Prior to the training 44% of attendees showed that they had little or no knowledge on how to report a concern disclosure or allegation. This decreased significantly to just 1% with a little knowledge at the end of the training session.

This is evidence that the training has a positive impact on knowledge and understanding.



We have asked those that attended to rate their knowledge on the *Learning Outcomes* before and after the session:

- "If you see it, report it!"*
- Clear and interesting session. Realised my responsibilities much more than before. Thank you."*
- "I found this course gave me more awareness and was very much needed. In general, very worthwhile. A pleasure and very important. The more people that attend this course, the more chance we can be successful collectively combined."*
- "We act as a bridge between council and customer (old and young). Being aware is also very important."*
- "This course is very helpful in taxi business to protect the vulnerable people. Excellent teaching."*
- "Very informative on all different issues, and feel better for having sat in on the training."*
- "Often customers ask, befriend or need advice. Unfortunately, I'm not able to give advice, or the help they need is not always available, nor am I a social worker. The professionals need to do more."*
- "Implement authorities to act on reported—this is for the licensing teams and police."*

Suicide Prevention

Following concerns raised by the police relating to the increased number of incidents to which they were being called to bridge locations across the borough highlighting the risks of potential suicide.

Police, Cheshire East Highways, Community Safety and Public Health officers linked up with The Samaritans to consider ways in which help and support could be offered to those at risk of suicide.



Working with the police to use data on potential bridge locations a number of signs were ordered (*see above*) to be erected on bridges across the borough.

The signage provides details where help can be provided and offers a caring message of those suffering from poor mental health. The Samaritans are unable to provide information relating to anyone contacting their service having acted upon the signage information.

Investigations into collisions showed that some of the incidents could have been prevented and that there are five main contributory factors that cause serious road traffic collisions.

These are known as the '*Fatal Five*':

- Careless driving
- Drink and drug driving
- Not wearing a seatbelt
- Using a mobile phone
- Speeding

Road users who commit one of the Fatal Five offences are far more likely to be involved in a fatal collision than those who do not.

Since the placing of the signs, there have been no further reported incidents made to the police.

Adults, Children's Safeguarding and Community Safety Award

In November 2023, over 100 people were invited to join celebrations at the Safeguarding & Community Safety Awards.

The awards take place every two years and provide the opportunity to acknowledge those officers and volunteers who have exceeded in their roles in supporting residents of Cheshire.

Helen Charlesworth-May opened the event joined by Cllr Rod Fletcher, Mayor of Cheshire East who spoke about the wonderful achievements and dedication of the winners.

Safer Cheshire East Partnership (SCEP) Winners for 2023–24 are listed below:

Making a Difference in the Community Award:
Lori Hawthorne

Partnership Working Award:
The Older Persons Scams Awareness & Aftercare Project

The Public Community Award:
PCSO Tom Faulkner & PCSO Scott Watson

Special Recognition Award:
PC Simon Highley

Volunteers of the Year Award:
All Saints & St Marks Community Café's

BELOW: *Scott Watson receiving his award from Inspector Jim Adams*





Pickmere Lake

The Cheshire Water Safety Partnership was created to reduce the risk of water related incidents which SCEP attend and support the work of the group.

Pickmere lake, located in Cheshire East is just one of the sites attracting visitors which caused concerns by the local Parish Council relating to water safety.

Pickmere lake, especially during periods of warm weather, has become popular with visitors and

areas around the lake attracts large groups of people.

In the main, the majority enjoy the surroundings, however there is a minority who drink alcohol, take drugs, light BBQ's, leave litter and create a noise nuisance which has increased the concerns beyond those using the lake for swimming.

The increase in visitor numbers to Pickmere has also had an impact on parking in the village. Cheshire East Council working closely with partners including Highways, the ASB Team, local Police and Cheshire West and



Chester Council completed site visits and created an 'Action Plan' to address the concerns of local residents.

Overseen by the PCC office, communication is being maintained with Parish Councils bordering the lake to update on progress. Cheshire East Highways have funding approved to produce a parking plan for the village and plans are in place to address signage and parking management improvements in the residential areas neighbouring the lake.

Pickmere lake also borders Cheshire West and Chester Council and a joint site visit between council officers and other partners took place in September 2023.

Following the visit an 'Action Plan' and report was produced which focused on addressing a number of issues at the site which included:

- **Parking/traffic management issues around Pickmere village**
- **High volumes of visitors congregating around the lake**
- **Anti Social Behaviour, including disposable barbecue usage, and subsequent damage/wildfires**
- **Littering**
- **Substance Misuse**
- **Urination/defecation**
- **Noise issues**

Work continues between partners to improve the conditions for local residents.

8 Communication and Engagement >

Days of Action

SCEP plans include the process to incorporate the views of the public in the development of its work and this can be evidenced in work undertaken within the delivery of 'Days of Action'.

The events are aimed supporting local residents and providing them with information as to the work carried out by a range of agencies to keep them and their communities safe. Partners including Police, Fire Service, Cheshire East Council, Health and Probation visit residents and complete questionnaires around a particular theme.

Shavington in Crewe saw the latest Day of Action event held in June 2023 which focused on raising the awareness of violence against women and girls. A total of 685 properties were visited and 198 questionnaires were completed.

The responses provided a rich source of community intelligence to assist agencies understand any local concerns. Resident being asked about how safe they in Crewe, 53% of people said that they did not feel unsafe in public places in Crewe and 44% of people said that they did feel unsafe. Over 50% of the people that said that they did not feel unsafe also said that they did not visit Crewe, therefore, the true figure for people who say that they feel unsafe in Crewe is a greater proportion than 44%.

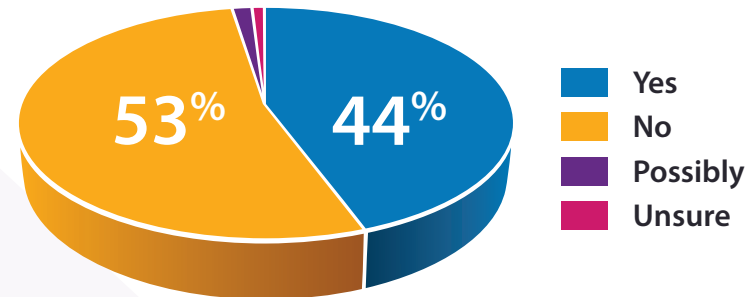
Respondents were asked what contributed to their feelings of being unsafe in Crewe. The graph opposite highlights how safe people felt followed by the 3 main reasons why they would feel unsafe.



Following the Day of Action, residents were provided with a feedback information sheet which also included details of where any concerns around safety could be reported.

In addition, Cheshire East highways undertook a review of the town centre street lighting and worked with Cheshire East CCTV to erect mobile cameras to reduce levels of ASB incidents.

Have You Ever Felt Unsafe In Public Places Within Crewe?



3 Main reasons for feeling unsafe

1. Groups of people
2. A lack of street lighting
3. Anti-social behaviour



Knife Angel

The Knife Angel Project was lead by Crewe Town Council with funding being provided by them together with a bid to the PCC office through SCEP.

Partners included Cheshire East Council, *(including departments representing Community Safety, Education, Planning, Assets, Legal and Youth Support)*, Police, Cheshire Fire, Probation along with local Community Groups.

Crewe was the venue for the Knife Angel statue (*PICTURED ABOVE*) which was made up of 100,000 seized blades, weighing in at 3.5tonnes and towering over Crewe Memorial Square at 27ft tall, the Knife Angel is a hugely symbolic monument to social change. Created to highlight and spark important conversations about the negative effect of violence, especially knife crime, the sculpture is on its first visit to Crewe and stood as an emotive symbol in Crewe throughout the month of May 2023.

During the display of the statue, partner agencies working under the direction of Crewe Town Council held a variety of events organised during the 4 week including:

A Police mobile unit positioned in front of the statue providing information, a knife amnesty bin, an art group provided a play written about knife crime which was performed to 2000 school children across Crewe schools, a knife art competition ran by the Probation Services with the work displayed at the closing ceremony and local radio broadcasts throughout the month along with the printing of thousands of leaflets with full details of the Knife Angel project distributed to Crewe residents.

Casualty numbers from knife wounds did not reduce during the month of May (*lots of County Lines issues across Crewe*) but improved communication between hospital staff with Police and other agencies was fluid.

The Knife Angel project has been very rewarding mainly resulting from the partners invited to support the Knife Angel project being able to network, exchange details and maintain contact to support each other across Crewe. Local businesses benefited from the increase in footfall during display month.

Raising awareness around knife crime was also effective, with the knife amnesty being incredibly positive with over 1000 articles being handed in over the period.



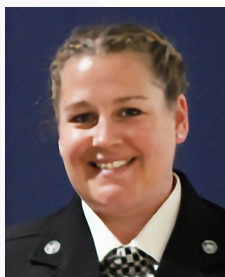
Jill Broomhall
Chair of SCEP
Director of Adult Social Care
CHESHIRE EAST COUNCIL



Sandra Murphy
Head of Adult Safeguarding
CHESHIRE EAST COUNCIL



Richard Christopherson
Locality Manager
Community Safety
CHESHIRE EAST COUNCIL



Claire Jesson
Eastern Area Commander
CHESHIRE CONSTABULARY



Matt Barlow
Cheshire East Service
Delivery Manager
CHESHIRE FIRE AND RESCUE SERVICE



Gillian Staniforth
Head of PDU
CHESHIRE EAST AND CHESHIRE COURTS

SAFER Cheshire East Partnership